

N6.2400 G-E  
N6.2900 G-E  
N7.3600 G-E  
N7.4500 G-E

# elco



Технические характеристики  
Datos técnicos  
Τεχνικά δεδομένα  
Parametry techniczne  
Teknik veriler



ru, es..... 4200 1032 2200  
gr, pl..... 4200 1032 2300  
tr..... 4200 1032 2400



Электрические и гидравлические схемы  
Esquemas eléctrico e hidráulico  
Ηλεκτρικά και υδραυλικά σχεδιαγράμματα  
Schemat elektryczny i hydrauliczny  
Elektrik ve hidrolik şemalar



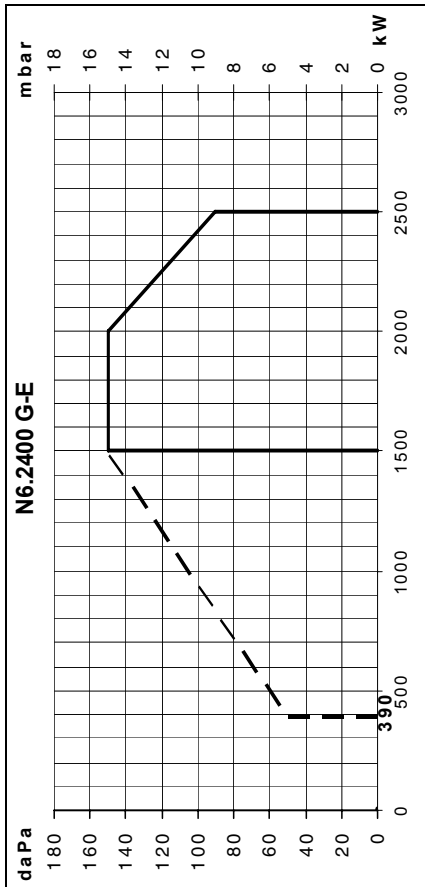
Запчасти  
Piezas de recambio  
Ανταλλακτικά  
Części zamienne  
Yedek parçalar



WWW.SMARTFLAM.BY   
**SmartFlam**

Импортер  
в Республику Беларусь  
8 (029) 11 915 11 INFO@SMARTFLAM.BY

	N6.2400 G-E	N6.2900 G-E	N7.3600 G-E	N7.4500 G-E
Μощность горелки мин./макс., кВт	390-2500	400-3000	580-4100	680-5000
Κοэффициент регулирования	min. 1 : 5			
Τοпливо Природный газ (G20) Природный газ (G25)	(G20) H <sub>i</sub> = 10,365 kWh / m <sup>3</sup> (G25) H <sub>i</sub> = 8,83 kWh / m <sup>3</sup>			
Νοмер одобрения CE	-			
Νοмер одобрения SSIGE	SSIGE onay numarası			
Κласс выброса загрязняющих веществ по стандарту EN 676 при работе на природном газе: NOx < 80 мг/кВтч, в стандартных условиях испытаний	Emisyon sınıfı EN 676'ye göre doğal gaz: NOx < 80mg/kWh, standart deneme şartlarında 2			
Блок управления и безопасности	Güvenlik kutusu Etamatic			
Газовая рампа	Газ rampası VGD... - MBC...			
Подсоединение газа	Rp1"1/4 - DN100	Rp1"1/4 - DN100	Rp1"1/4 - DN100	Rp1"1/2 - DN100
Давление газа на входе	50 - 300 mbar			
Настройка подачи воздуха Воздушная заслонка	Hava ayarı Hava klapesi X			
Привод воздушной заслонки Серводвигатель	Hava klapesi kumandası servo motor STM 30			
Реле давления воздуха (диапазон регулировки)	Hava basıncı şalteri (ayar aralığı) 2.5 ... 50 mbar			
Контроль пламени с блоком управления Etamatic	Alev gözetimi Etamatic kutusu ile FFS 06 UV			
Устройство розжига	Ateşleyici EBI 1P			
Электродвигатель	3.0 kW	4.0 kW	5.5 kW	7.5 kW
Напряжение	400V - 50Hz			
Потребляемая электрическая мощность: (при работе)	max. 4250 VA	max. 5300 VA	max. 7250 VA	max. 9700 VA
Приблизительная масса, кг	290			
Класс электрозащиты	Koruma endisi IP 41			
Уровень шума измерение по стандарту EN15036-1 (LpFA)	< 70	< 71	< 74	< 75
Окружающая температура при хранении мин./макс	Ortam sıcaklığı çalışma: min./maks - 5 ... + 60°C			
Окружающая температура при работе: мин./макс.	Ortam sıcaklığı çalışma: min./maks 0 ... + 50°C			



**Кривые мощности При выборе горелки необходимо учитывать КПД котла.**

Кривая мощности показывает изменение мощности горелки в зависимости от давления в топочной камере сгорания. Они соответствуют максимальным значениям, измеренным согласно EN 676 в стандартном канале.

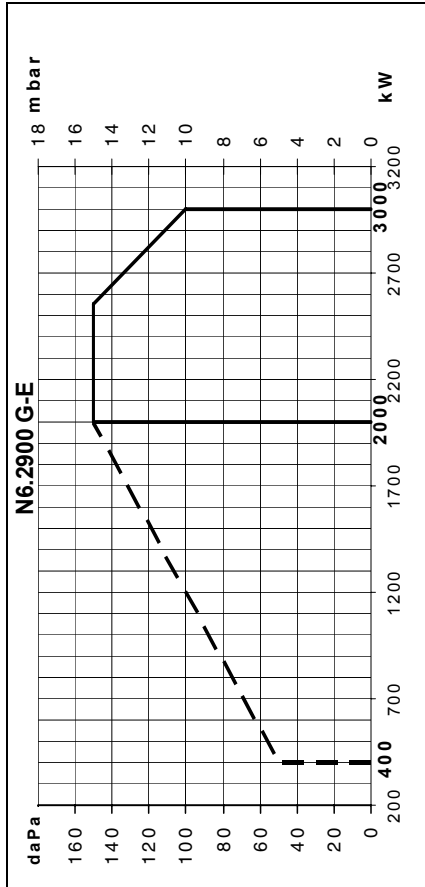
Расчет мощности горелки:

$$Q_F = \frac{Q_N}{\eta} \times 100$$

$Q_F$  = мощность горелки (кВт)  
 $Q_N$  = номинальная мощность котла (кВт)  
 $\eta$  = КПД котла, %

**Условные обозначения:**

**N** = NEWTRON  
**6** = Типоразмер  
**2900** = Обозначение мощности  
**G** = Природный газ  
**E** = Работа с электронным модулированием



**Гүч эгрілери**

**Brülör seçeneği için kazan veriminin katsayısı dikkate alınmalıdır.**

Гүч аралığı, ocak tertibatında mevcut basınca göre brülör gücünü gösterir. Standart tünelde EN 676 normuna göre ölçülen maksimum değeriye uymaktadır. Brülör gücü hesabı

$$Q_F = \frac{Q_N}{\eta} \times 100$$

$Q_F$  = brülör gücü  
 $Q_N$  = kazan nominal gücü (kW)  
 $\eta$  = kazan verimi (%)

**Açıklama:**

**N** = NEWTRON  
**6** = Boyut  
**2900** = Güç referansı  
**G** = Doğal gaz  
**E** = Kademeli elektronik çalışma

**Krzywe mocy Przy wyborze palnika należy uwzględnić współczynnik sprawności cieplnej kotła.**

Zakres działania określa moc palnika w stosunku do ciśnienia panującego w palenisku. Zakres odpowiada maksymalnym wartościom zmierzonym w normalizowanym tunelu zgodnym z EN 676.

Obliczenie mocy palnika:

$$Q_F = \frac{Q_N}{\eta} \times 100$$

$Q_F$  = moc palnika (kW)  
 $Q_N$  = moc znamionowa kotła (kW)  
 $\eta$  = sprawność ciepła kotła (%)

**Legenda:**

**N** = NEWTRON  
**6** = Wielkość  
**2900** = Wartości odniesienia mocy  
**G** = Gaz ziemny  
**E** = Elektroniczne działanie modułacyjne

**Καμπύλες ισχύος Για την επιλογή του καυστήρα, πρέπει να λαμβάνεται υπόψη ο βαθμός απόδοσης του λέβητα.**

Η περιοχή ισχύος αναπαριστά την ισχύ του καυστήρα σε συνάρτηση με την πίεση που επικρατεί στο θάλαμο καύσης. Αντιστοιχούν στις μέγιστες τιμές που μετρήθηκαν σε έναν τυποποιημένο θάλαμο καύσης σύμφωνα με το πρότυπο EN 676.

Υπολογισμός της ισχύος του καυστήρα:

$$Q_F = \frac{Q_N}{\eta} \times 100$$

$Q_F$  = ισχύς του καυστήρα (kW)  
 $Q_N$  = ονομαστική ισχύς του λέβητα (kW)  
 $\eta$  = απόδοση του λέβητα (%)

**Λεζάντα:**

**N** = NEWTRON  
**6** = Μέγεθος  
**2900** = Κωδικός ισχύος  
**G** = Φυσικά αέρια  
**E** = Ηλεκτρονική ρυθμιζόμενη λειτουργία

**Curvas de potencia Para seleccionar el quemador es necesario tener en cuenta el coeficiente de rendimiento de la caldera.**

El intervalo de potencia representa la potencia del quemador en función de la presión existente en el hogar. Estas corresponden a los valores máximos medidos según EN 676, en un túnel normalizado. Cálculo de la potencia del quemador:

$$Q_F = \frac{Q_N}{\eta} \times 100$$

$Q_F$  = potencia del quemador (kW)  
 $Q_N$  = potencia nominal de la caldera (kW)  
 $\eta$  = rendimiento de la caldera (%)

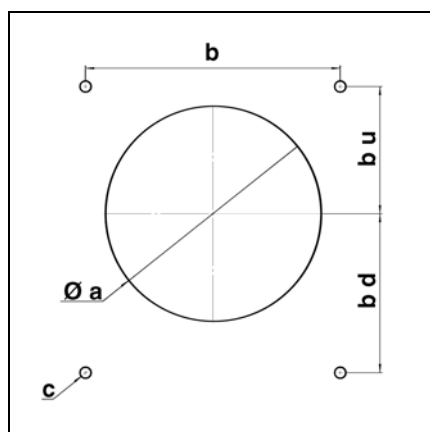
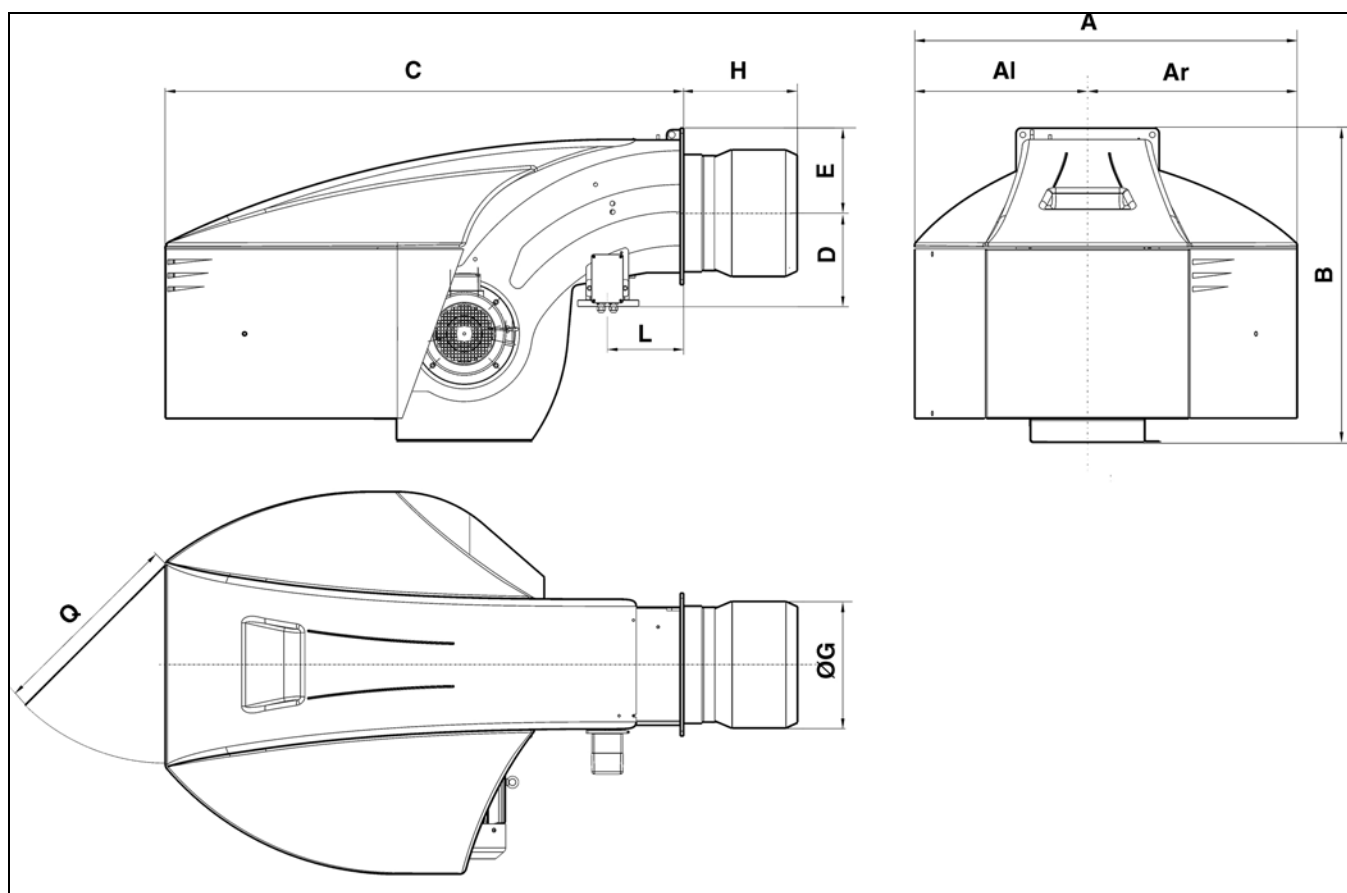
**Leyenda:**

**N** = NEWTON  
**6** = Medidas  
**2900** = Referencia de potencia  
**G** = Gas natural  
**E** = Funcionamiento modulante electrónico





Габаритный чертеж (горелка)  
 Plano de medidas (queimador)  
 Σχέδιο απαιτήσεων χώρου (καυστήρας)  
 Plan powierzchni zabudowy (palnik)  
 Ölçü planı (brülör)



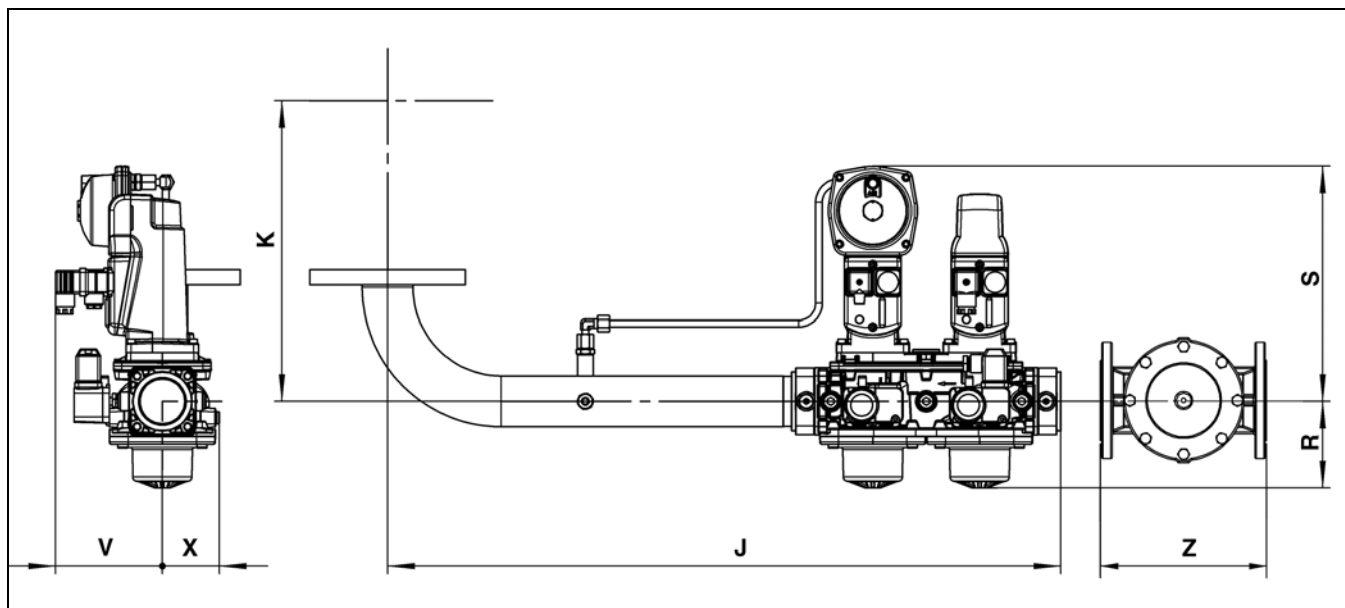
	A	AI	Ar	B	C	D	E	ØG	H			L	Q
									KN	KM	KL		
N6G-E	990	479	510	837	1361	245	225	320	330	450	570	215	600
N7G-E	1128	511	618	961	1529	276	255	370	375	505	635	225	

	Øa	b	bu	bd	c
N6G-E	295	340	170	170	M16
N7G-E	360	400	200	200	M18

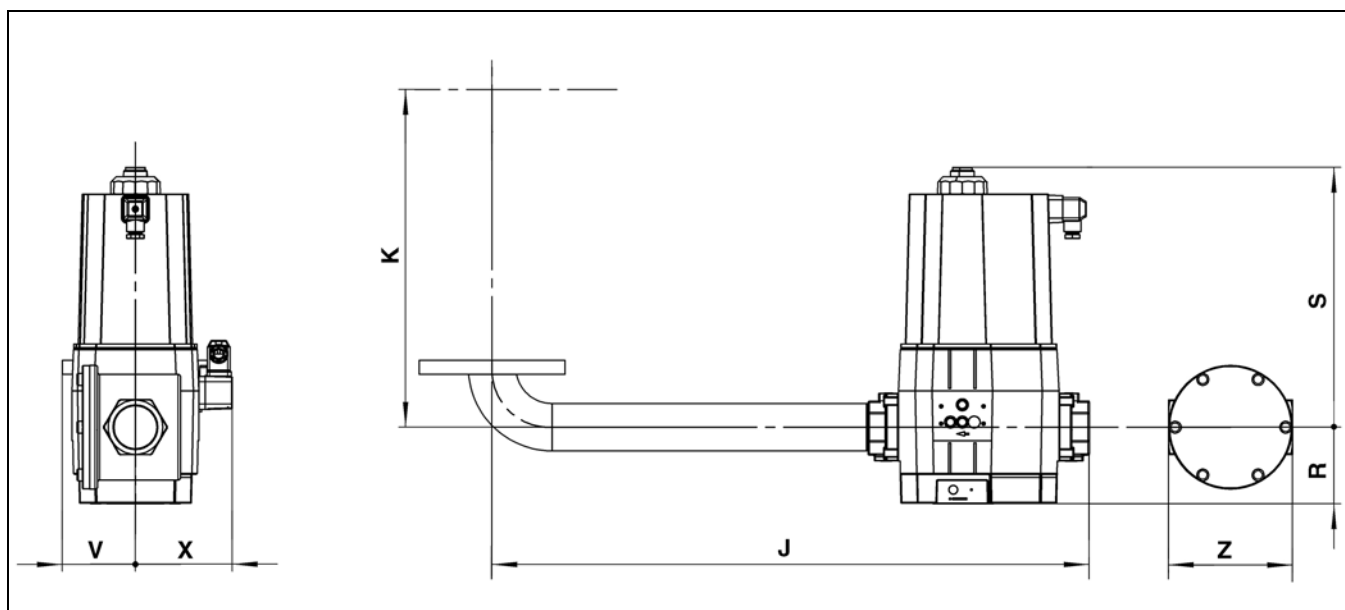


Импортер  
 в Республику Беларусь  
 8 (029) 11 915 11 INFO@SMARTFLAM.BY

Габаритный чертеж (газовая рампа)  
 Plano de medidas (rampa de gas)  
 Σχέδιο απαιτήσεων χώρου (γραμμή αερίου)  
 Plan powierzchni zabudowy (rampa gazowa)  
 Ölçü planı (gaz rampası)

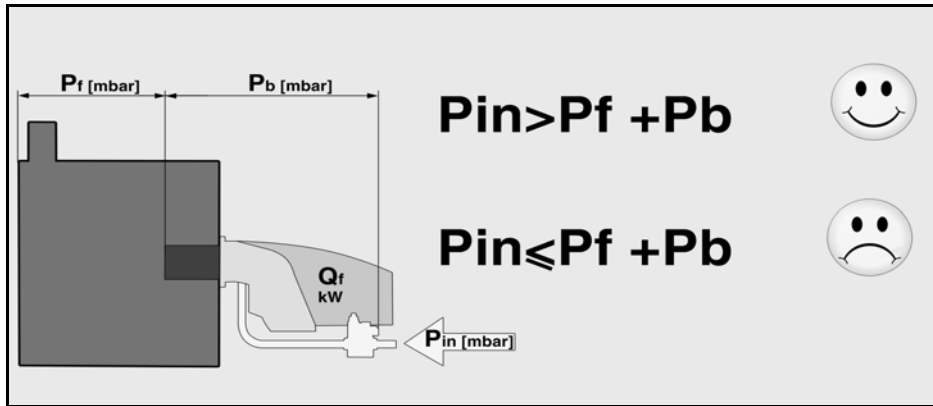


	J	K		R	S	V	X	Z
		N6	N7					
s1"1/2 - DN65	866	311	342	95	279	127	65	245
s2" - DN80	866	330	361	103	279	127	65	285
s65 - DN80	792	349	380	139	303	127	108	285
s80 - DN80	812	369	400	145	313	133	110	285
s100 - DN100	852	369	400	156	331	144	126	340
s125 - DN125	902	369	400	175	397	158	140	400

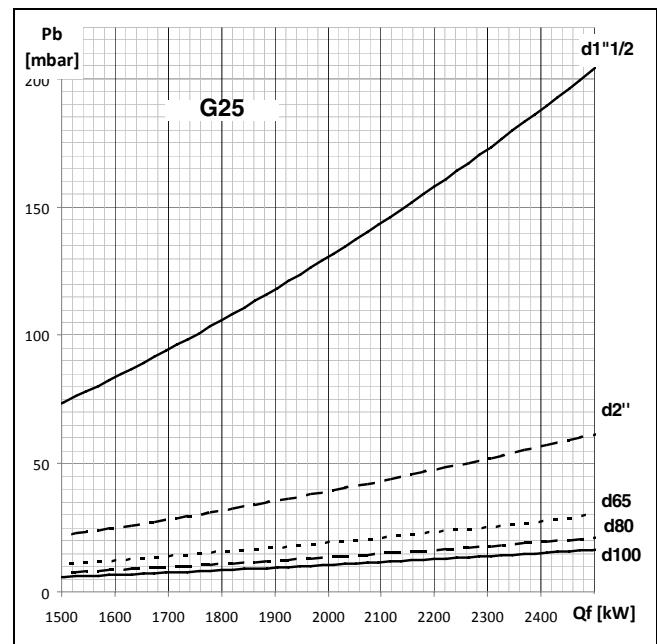
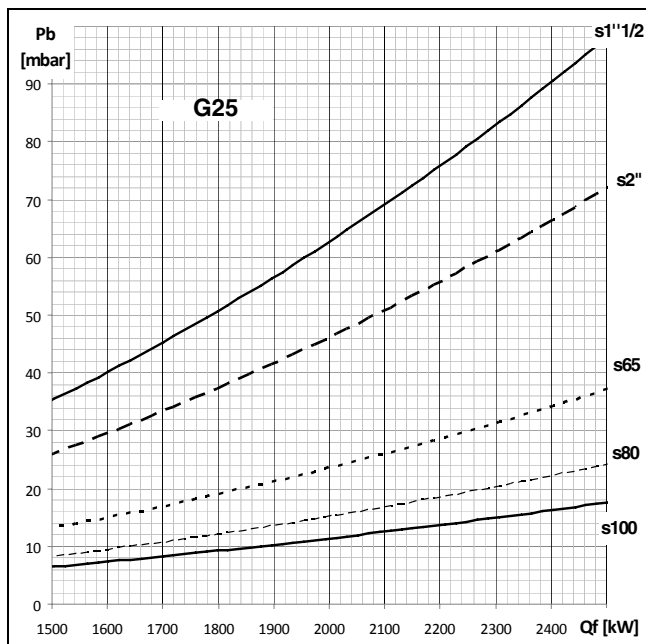
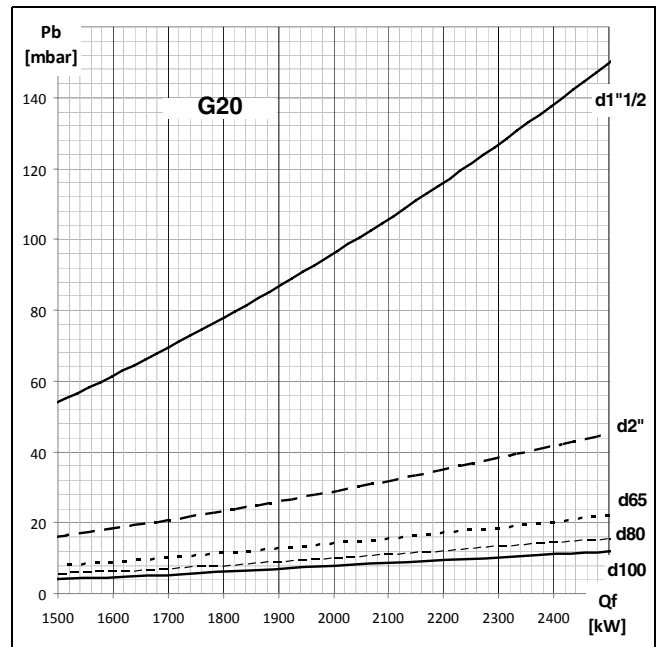
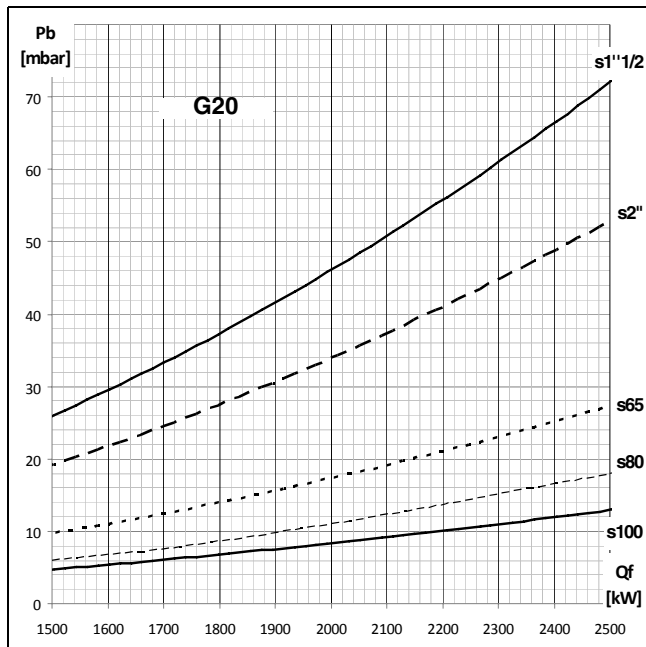


	J	K		R	S	V	X	Z
		N6	N7					
d1"1/4 - Rp1"1/4	625	311	342	61	173	171	86	-
d1"1/2 - Rp1"1/2	683	311	342	80	186	184	99	-
d2" - Rp2"	757	330	361	98	328	208	122	-
d65 - DN80	792	349	380	183	246	192	107	245
d80 - DN80	812	369	400	207	292	199	114	285
d100 - DN100	852	369	400	244	329	208	123	340
d125 - DN125	902	369	400	250	415	223	138	400

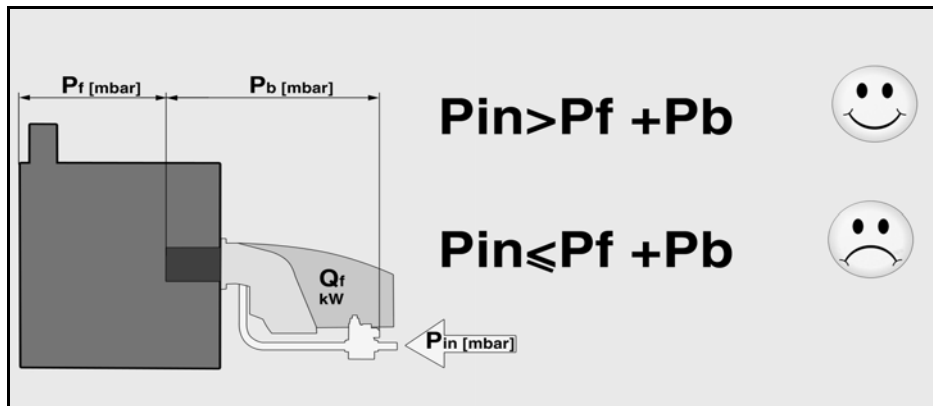
**Потери давления Pb (рампа + головка горелки)**  
**Pérdidas de carga Pb (rampa de gas + cabezal de combustión)**  
**Απώλειες φορτίου Pb (Γραμμή αερίου + κεφαλή καύσης)**  
**Straty ciśnienia Pb (Rampa gazowa + głowica spalania)**  
**Yük kaybı Pb (Gaz rampası + yanma kafası)**



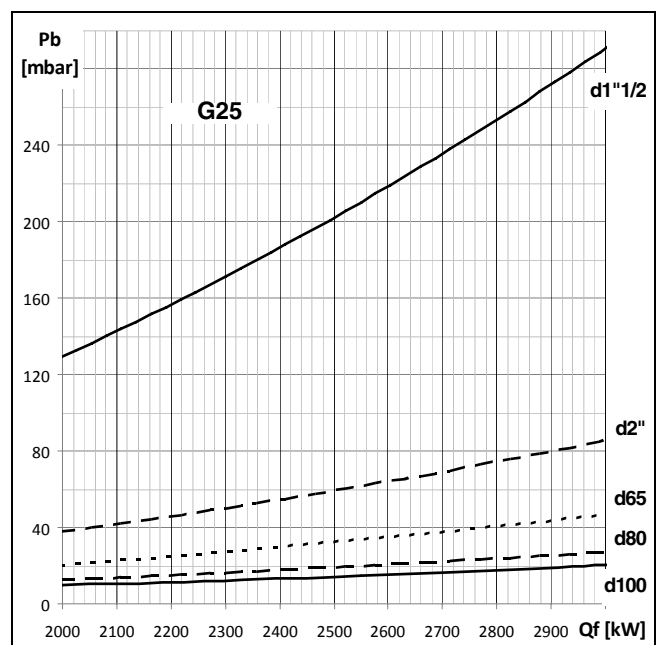
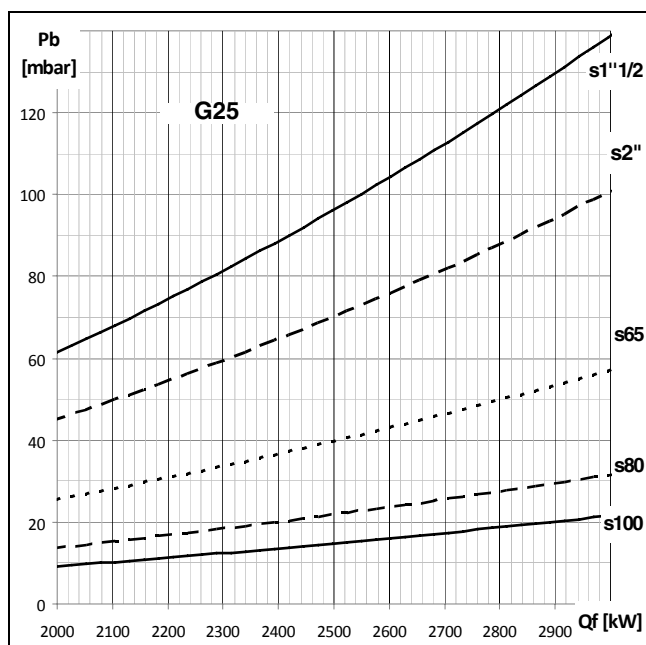
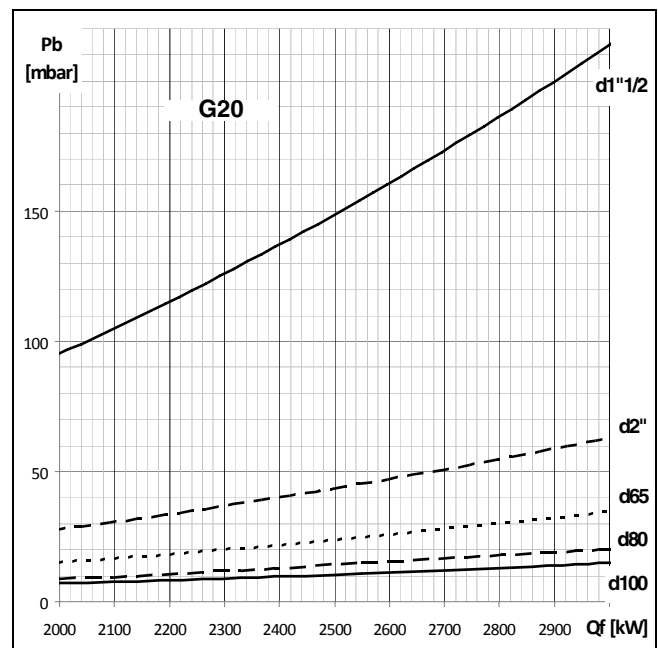
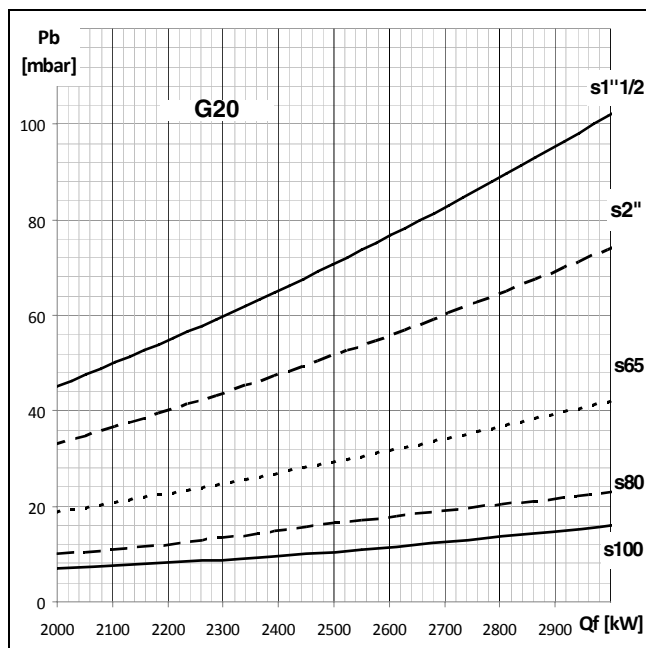
N6.2400 G-E



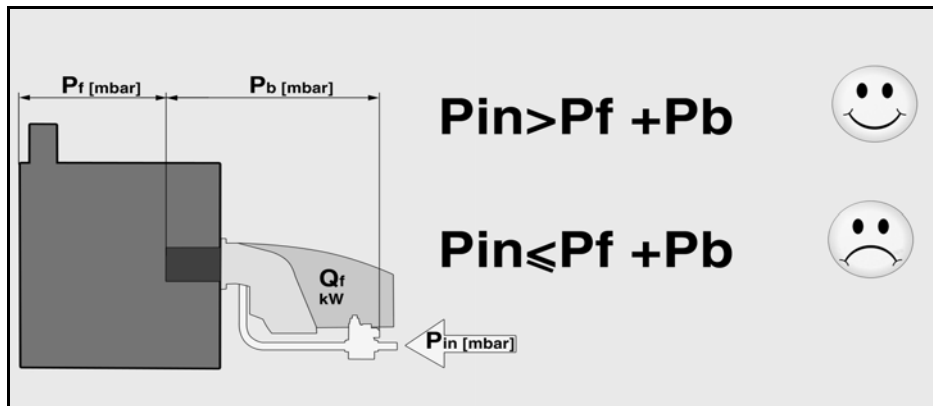
**Потери давления Pb (рампа + головка горелки)**  
**Pérdidas de carga Pb (rampa de gas + cabezal de combustión)**  
**Απώλειες φορτίου Pb (Γραμμή αερίου + κεφαλή καύσης)**  
**Straty ciśnienia Pb (Rampa gazowa + głowica spalania)**  
**Yük kaybı Pb (Gaz rampası + yanma kafası)**



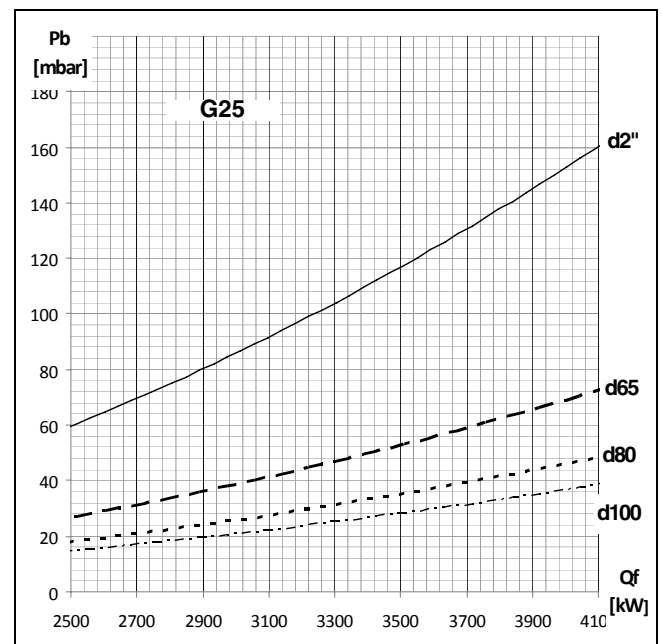
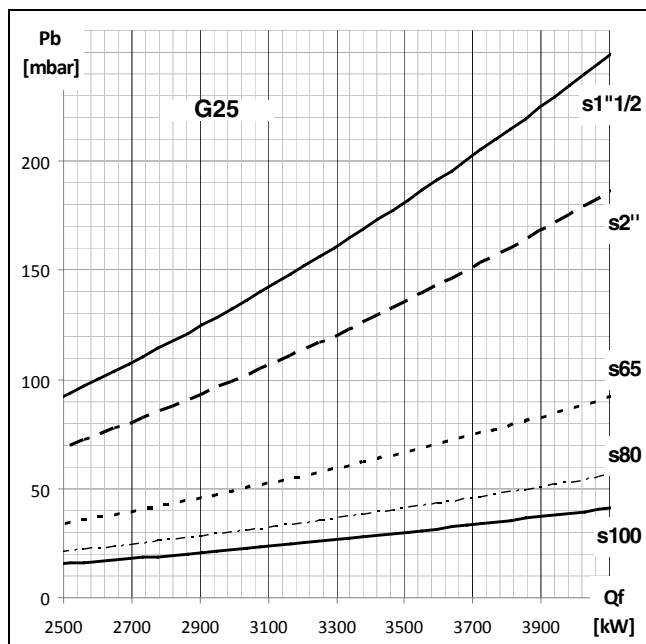
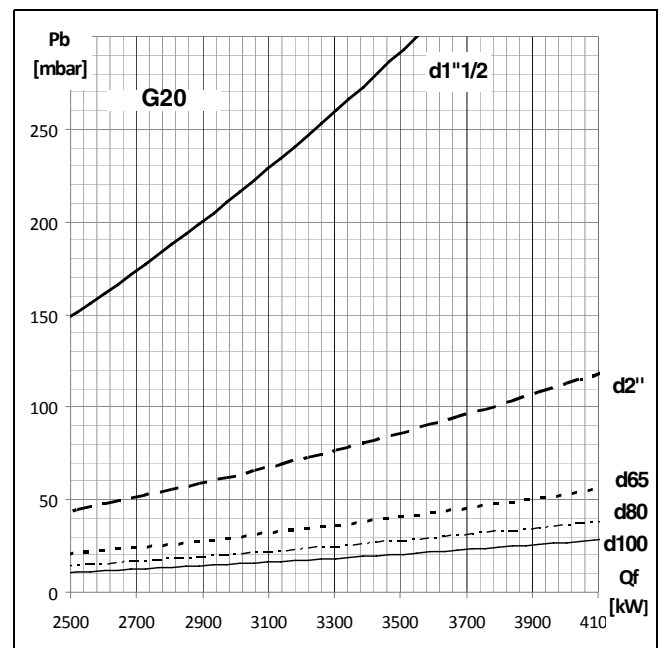
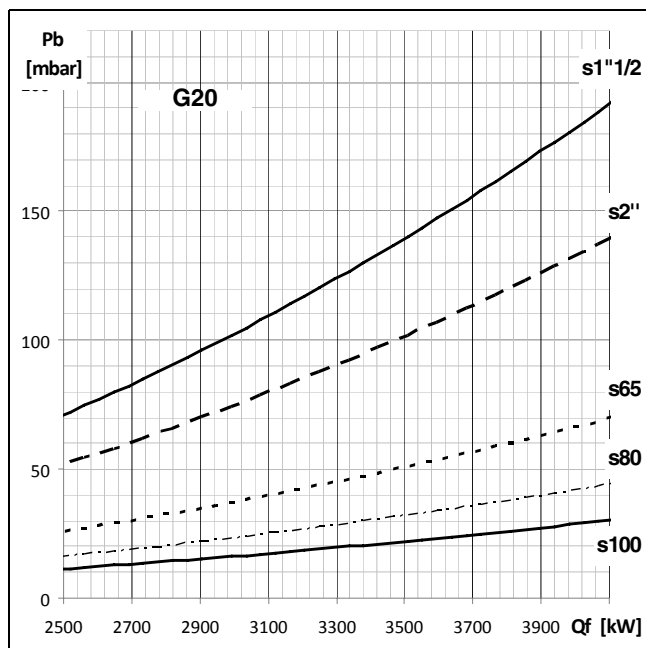
N6.2900 G-E



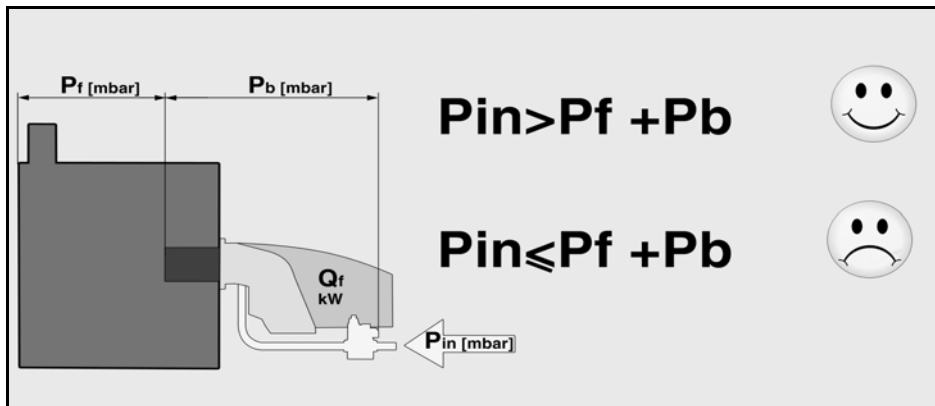
**Потери давления Pb (рампа + головка горелки)**  
**Pérdidas de carga Pb (rampa de gas + cabezal de combustión)**  
**Απώλειες φορτίου Pb (Γραμμή αερίου + κεφαλή καύσης)**  
**Straty ciśnienia Pb (Rampa gazowa + głowica spalania)**  
**Yük kaybı Pb (Gaz rampası + yanma kafası)**



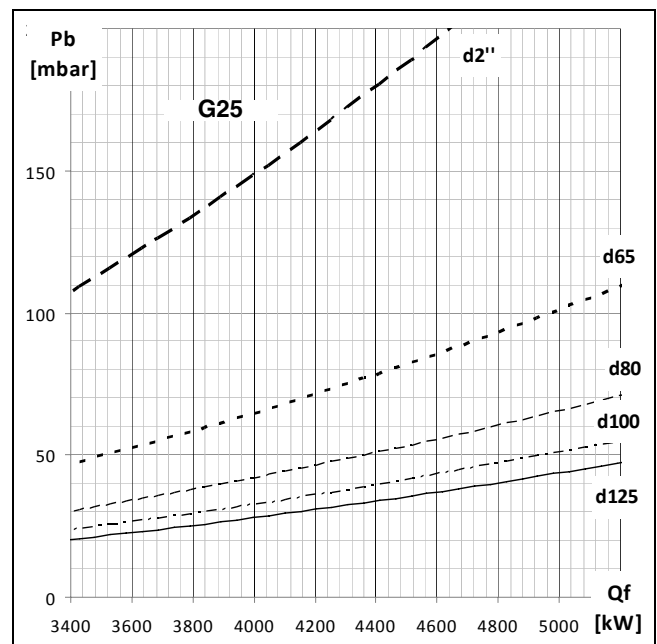
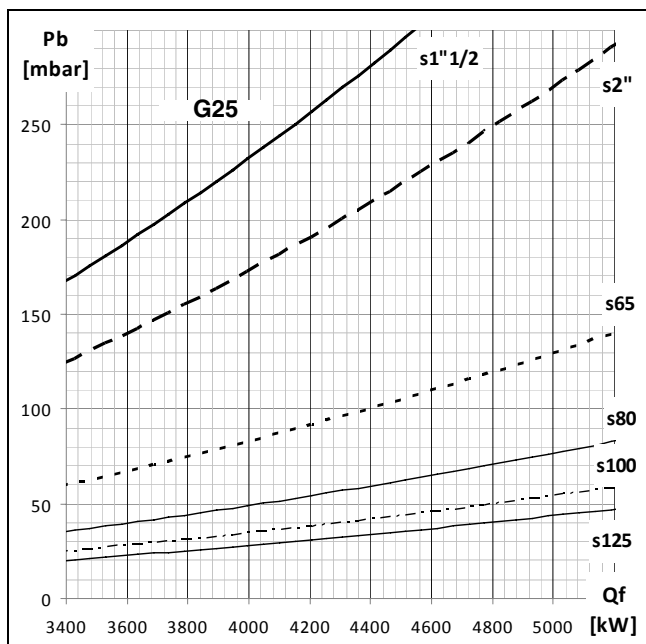
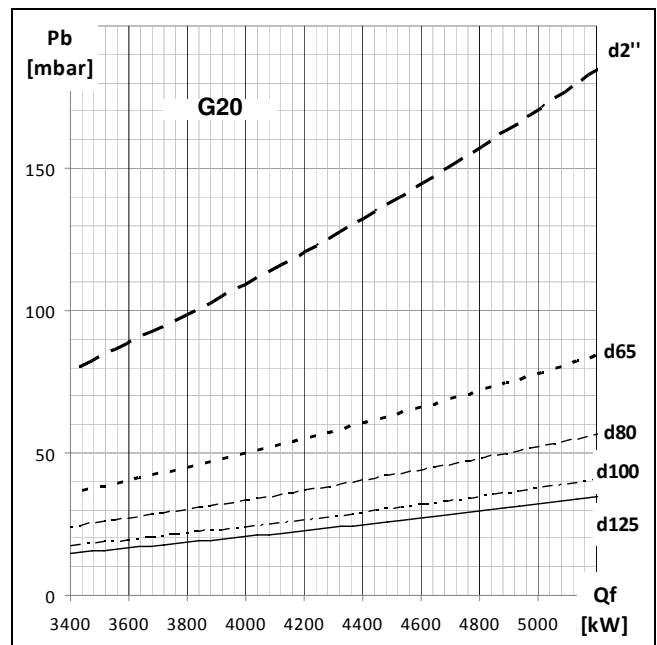
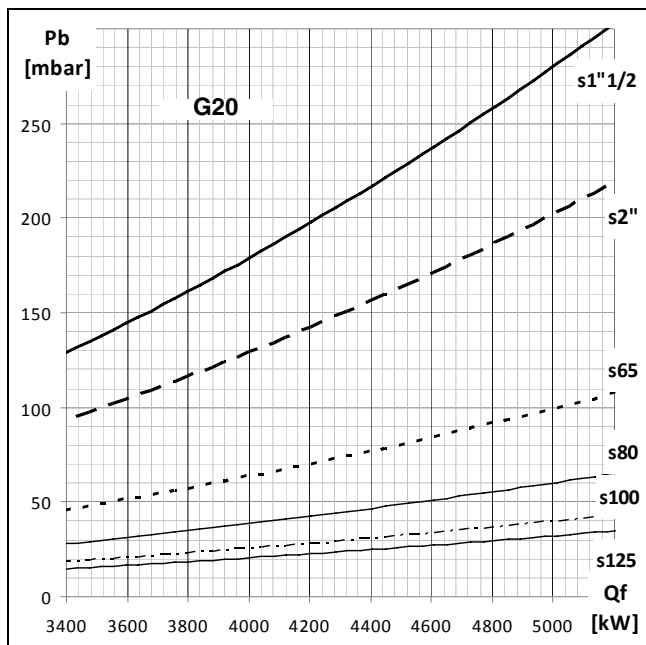
N7.3600 G-E



**Потери давления Pb (рампа + головка горелки)**  
**Pérdidas de carga Pb (rampa de gas + cabezal de combustión)**  
**Απώλειες φορτίου Pb (Γραμμή αερίου + κεφαλή καύσης)**  
**Straty ciśnienia Pb (Rampa gazowa + głowica spalania)**  
**Yük kaybı Pb (Gaz rampası + yanma kafası)**



N7.4500 G-E



N6.2400 G-E  
N6.2900 G-E  
N7.3600 G-E  
N7.4500 G-E

elco



Электрические и гидравлические схемы  
Esquemas eléctrico e hidráulico  
Ηλεκτρικά και υδραυλικά σχεδιαγράμματα  
Schemat elektryczny i hydrauliczny  
Elektrik ve hidrolik şemalar



WWW.SMARTFLAM.BY   
**SmartFlam**

Импортер  
в Республику Беларусь  
8 (029) 11 915 11 INFO@SMARTFLAM.BY

2-10-MW Project

Documentation for the available equipment for E type burners attached tables to schematic.

TABLE A

Burner Motor supply

This table describes the options in defining the kind of fan motor control to be built in into the burner's Switch cabinet.

No.	Description	Burner	Data	Non compatible with	Remarks
A1	Direct starter	<b>N6.2400</b>  <b>N6.2900</b>  <b>N7.3600</b>  <b>N7.4500</b> (N3.600..F3)	<b>3kW (motor protection Ir=6,6A):</b> Fuse. 16AgL or gG Smin: 4x1,5mm <sup>2</sup> Lmax: 110m (du<=4%) <b>4kW (motor protection Ir=8,5A):</b> Fuse. 20AgL or gG Smin: 4x1,5mm <sup>2</sup> Lmax: 90m (du<=4%) <b>5,5kW (motor protection Ir=11,3A):</b> Fuse. 25AgL or gG Smin: 4x1,5mm <sup>2</sup> Lmax: 68m (du<=4%) <b>7,5kW (motor protection Ir=15,2A):</b> Fuse. 32AgL or gG Smin: 4x2,5mm <sup>2</sup> Lmax: 83m (du<=4%)		-WX.400 <i>Recommended cable type:</i> <i>Ölflex 110/100 4G ...mm<sup>2</sup></i> or <i>compatible IEC harmonized flexible and oil resistant type</i>  Please refer to local regulations if direct starter are allowed!! Expected starting current >=7x rated current!
A2	Star –Delta starter	<b>N6.2400</b>  <b>N6.2900</b>  <b>N7.3600</b>  <b>N7.4500</b> (N3.600..F3)	<b>3kW (motor protection Ir=6,6A):</b> Fuse. 16AgL or gG Smin: 4x1,5mm <sup>2</sup> Lmax: 110m (du<=4%) <b>4kW (motor protection Ir=8,5A):</b> Fuse. 16AgL or gG Smin: 4x1,5mm <sup>2</sup> Lmax: 83m (du<=4%) <b>5,5kW (motor protection Ir=11,3A):</b> Fuse. 16AgL or gG Smin: 4x1,5mm <sup>2</sup> Lmax: 77m (du<=4%) <b>7,5kW (motor protection Ir=15,2A):</b> Fuse. 16AgL or gG Smin: 4x2,5mm <sup>2</sup> Lmax: 56m (du<=4%)		-WX.400 <i>Recommended cable type:</i> <i>Ölflex 110/100 4G ...mm<sup>2</sup></i> or <i>compatible IEC harmonized flexible and oil resistant type</i>  Please refer to local regulations if Y-D starter are allowed!! Expected starting current >=3x rated current!
A3	Frequency converter industrial type burner integrated	<b>N6.2400</b>  <b>N6.2900</b>  <b>N7.3600</b>  <b>N7.4500</b> (N3.600..F3)	<b>3kW:</b> Fuse. 16AgL or gG Smin: 4x1,5mm <sup>2</sup> Lmax: 110m (du<=4%) <b>4kW:</b> Fuse. 16AgL or gG Smin: 4x1,5mm <sup>2</sup> Lmax: 83m (du<=4%) <b>5,5kW</b> Fuse. 16AgL or gG Smin: 4x1,5mm <sup>2</sup> Lmax: 77m (du<=4%) <b>7,5kW</b> Fuse. 16AgL or gG Smin: 4x2,5mm <sup>2</sup> Lmax: 56m (du<=4%)		-WX.400 <i>Recommended cable type:</i> <i>Ölflex 110/100 4G ...mm<sup>2</sup></i> or <i>compatible IEC harmonized flexible and oil resistant type</i>  Please refer to local EMC regulations if industrial standard FC are allowed!!  Standard FC does not include breaking resistors

2-10-MW Project

Documentation for the available equipment for E type burners attached tables to schematic.

No.	Description	Burner	Data	Non compatible with	Remarks
A4	Frequency converter domestic type burner integrated	<p><b>N6.2400</b></p> <p><b>N6.2900</b></p> <p><b>N7.3600</b></p> <p><b>N7.4500</b> (N3.600..F3)</p>	<p><b>3kW:</b> Fuse. 16AgL or gG Smin: 4x1,5mm<sup>2</sup> Lmax: 110m (du&lt;=4%)</p> <p><b>4kW:</b> Fuse. 16AgL or gG Smin: 4x1,5mm<sup>2</sup> Lmax: 83m (du&lt;=4%)</p> <p><b>5,5kW</b> Fuse. 16AgL or gG Smin: 4x1,5mm<sup>2</sup> Lmax: 77m (du&lt;=4%)</p> <p><b>7,5kW</b> Fuse. 16AgL or gG Smin: 4x2,5mm<sup>2</sup> Lmax: 56m (du&lt;=4%)</p>	A1.-A.3 A.5	<p>-WX.400</p> <p><i>Recommended cable type:</i> <i>Ölflex 110/100 4G ...mm<sup>2</sup></i> <i>or</i> <i>compatible IEC harmonized flexible and oil resistant type</i></p> <p>Please refer to local EMC regulations if domestic standard FC are necessary!</p> <p>Standard FC does not include breaking resistors</p>
A5	Burner prepared for application of an external frequency converter	<p><b>N6.2400</b></p> <p><b>N6.2900</b></p> <p><b>N7.3600</b></p> <p><b>N7.4500</b> (N3.600..F3)</p>	<p><b>3kW:</b> Fuse. 16AgL or gG Smin: 4x1,5mm<sup>2</sup> Lmax: 110m (du&lt;=4%)</p> <p><b>4kW:</b> Fuse. 16AgL or gG Smin: 4x1,5mm<sup>2</sup> Lmax: 83m (du&lt;=4%)</p> <p><b>5,5kW</b> Fuse. 16AgL or gG Smin: 4x1,5mm<sup>2</sup> Lmax: 77m (du&lt;=4%)</p> <p><b>7,5kW</b> Fuse. 16AgL or gG Smin: 4x2,5mm<sup>2</sup> Lmax: 56m (du&lt;=4%)</p>	A.1-A.4	<p>-WX.400</p> <p><i>Recommended cable type:</i> <i>Ölflex 110/100 4G ...mm<sup>2</sup></i> <i>or</i> <i>compatible IEC harmonized flexible and oil resistant type</i></p> <p>Pay attention according to the type of signal used for theoretical value, jog, release.</p> <p>Refer to the international and local regulations according to EMC, for motor feed use screened cables only! Pay attention to EMC regulations and FC's manufacturer advice.</p>



Импортер  
в Республику Беларусь  
8 (029) 11 915 11 INFO@SMARTFLAM.BY

2-10-MW Project

Documentation for the available equipment for E type burners attached tables to schematic.

TABLE B

I/O System

This table describes the options according to the input signals to the burner and according to the output signals from the burner  
-WX.230, -WX.230.S, -WX.24

Ölflex 110/100 CY ...G1,5mm<sup>2</sup> respective Ölflex 110/100 ...G1,5mm<sup>2</sup>

or

compatible IEC harmonized flexible, screened and oil resistant type

No.	Description	Data	Non compatible with	Remarks
	<b>Main control signals to/from XB2</b>			
B1-1	DI Safety chain boiler	potential free contact load 24VDC		
B1-2	DI Burner release (control chain )	potential free contact load 24VDC		
B1-3	DI Burner ON/OFF	potential free contact load 24VDC		
B1-4	DO Burner fault signal	voltage signal 230VAC		
B1-5	DO Burner operation signal	voltage signal 230VAC		
B1-6	DI External fuel safety chain	potential free contact load 24VDC		
	<b>Additional control signals to/from XB2</b>			
B2-1	AI Burner load signal from external load control unit	4-20mA signal		
B2-2	AO Air damper position (feedback signal)	voltage signal via 5000OHM potentiometer		

TABLE C

LSB/PC Commissioning

This table describes the commissioning access to the burner by means of remote software or the HMI module

*Recommended cable type:*

*according to manufacturer's information*

No.	Description	Data	Non compatible with	Remarks
C1	Handheld operator panel	Cable necessary: Prolongation cable 1:1 Sub9D to be plugged at double plug interface		
C2	Remote software	Equipment necessary: Dongle Remote Software FMS/VMS RS232 cable Sub9D USB/RS232 interface		Commissioning with the remote software demands the application of a hardware dongle a key word. Standard connection cables could be used.

2-10-MW Project

Documentation for the available equipment for E type burners attached tables to schematic.

TABLE E

FieldBus

This table describes the options to connect the burner to an external FieldBus system

-WX.COMM,

*Recommended cable type: refer to bus system's regulations*

No.	Description	Data	Non compatible with	Remarks
E1	ModBus Master	ModBus		
E2	Profibus Master	Profibus DP protocol		Plug will have to be fitted for built in directly into the burner's switch cabinet.
E3	Ethernet connection	Ethernet 10Mbit/100Mbit		

TABLE F

Human Machine Interface

This table describes the options in defining the different parts of the human machine interface of the burner.

No.	Description	Data	Non compatible with	Remarks
F1	Version with blank door		2-2 2-3	Necessary HMI unit is to be mounted externally
F2	Extended version of indicators Indicators: Power supply: white trouble: red Switches: power switch: on/off (integrated indicator) man-0-auto: control chain Customer interface built in	LED lights, 0,33W 230Vac	2-1 2-3	
F3	Extended version of indicators Indicators: Power supply: white trouble: red Switches: power switch: on/off (integrated indicator) man-0-auto: control chain Operator panel built in	LED lights, 0,33W 230Vac	2-1 2-2	

TABLE G

FieldBus Gateway

This table describes the options of the equipment of the burner with LSB connected FieldBus gateways

No.	Description	Data	Non compatible with	Remarks
G1	ModBus Gateway	ModBus RTU protocol	4-2 4-3	
G2	Profibus Gateway	Profibus DP protocol	4-1 4-3	
G3	Ethernet connection	Ethernet 10Mbit/100Mbit_IP-Adresse: 192.168.0.170	4-1 4-2	

TABLE H

LSB Options



2-10-MW Project

Documentation for the available equipment for E type burners attached tables to schematic.

This table describes the optional equipment of the burner with LSB devices

-WX.LSB,

*Recommended cable type: refer to LSB bus system's regulations*

*Ölflex 110/100 CY 54G1,0mm<sup>2</sup>*

*or*

*compatible IEC harmonized flexible, screened and oil resistant type*

No.	Description	Data	Non compatible with	Remarks
H1	CO-control	LT2 Transmitter LSB based with probe LS2 and CO detector probe KS1		
H2	O2-control	LT2 Transmitter LSB based with probe LS2		
H3	Other LSB parts could be applied by customization engineering process			

N6.2400 G-E  
N6.2900 G-E  
N7.3800 G-E  
N7.4500 G-E

elco



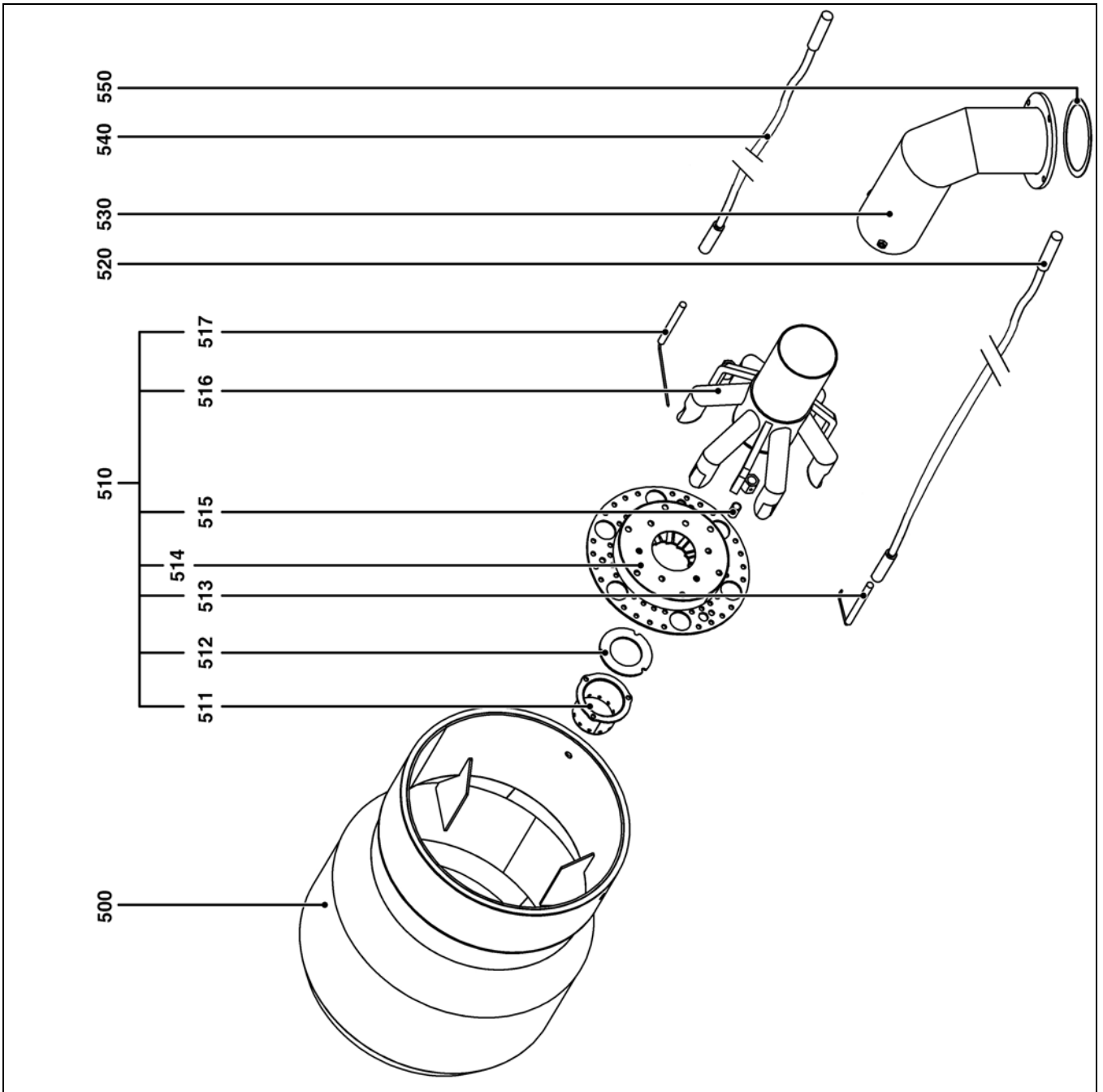
Запчасти  
Piezas de recambio  
Ανταλλακτικά  
Części zamienne  
Yedek parçalar



WWW.SMARTFLAM.BY   
**SmartFlam**

Импортер  
в Республику Беларусь  
8 (029) 11 915 11 [INFO@SMARTFLAM.BY](mailto:INFO@SMARTFLAM.BY)

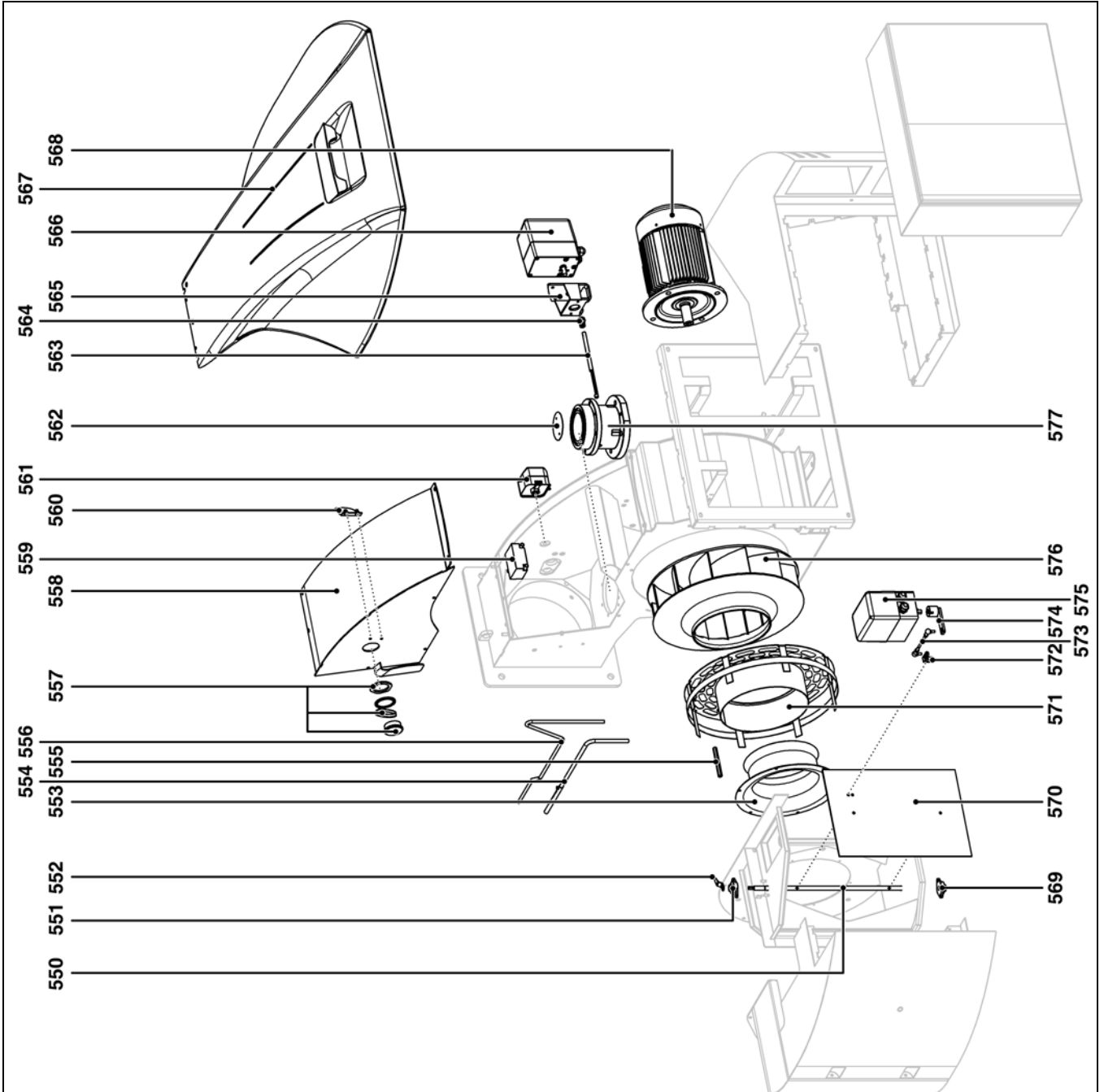
Pos.	Art. Nr.
500	N6.2400/2900 KN
	N6.2400/2900 KM
	N6.2400/2900 KL
	N7.3600/4500 KN
	N7.3600/4500 KM
	N7.3600/4500 KL
510	N6/7.2400/4500 KN/KL
511	N6/7.2400/4500 KN/KL
512	N6/7.2400/4500 KN/KL
513	N6/7.2400/4500 KN/KL
514	N6/7.2400/4500 KN/KL
515	N6/7.2400/4500 KN/KL
516	N6/7.2400/4500 KN/KL
517	N6/7.2400/4500 KN/KL
520	N6/7.2400/4500 KN/KL
530	N6.2400/2900 KN
	N6.2400/2900 KM
	N6.2400/2900 KL
	N7.3600/4500 KN
	N7.3600/4500 KM
	N7.3600/4500 KL
540	N6/7.2400/4500 KN/KL
550	N6/7.2400/4500 KN/KL



Pos.					
500					
510					
511					
512					
513					
514					
515					
516					
517					
520					
530					
540					
550					

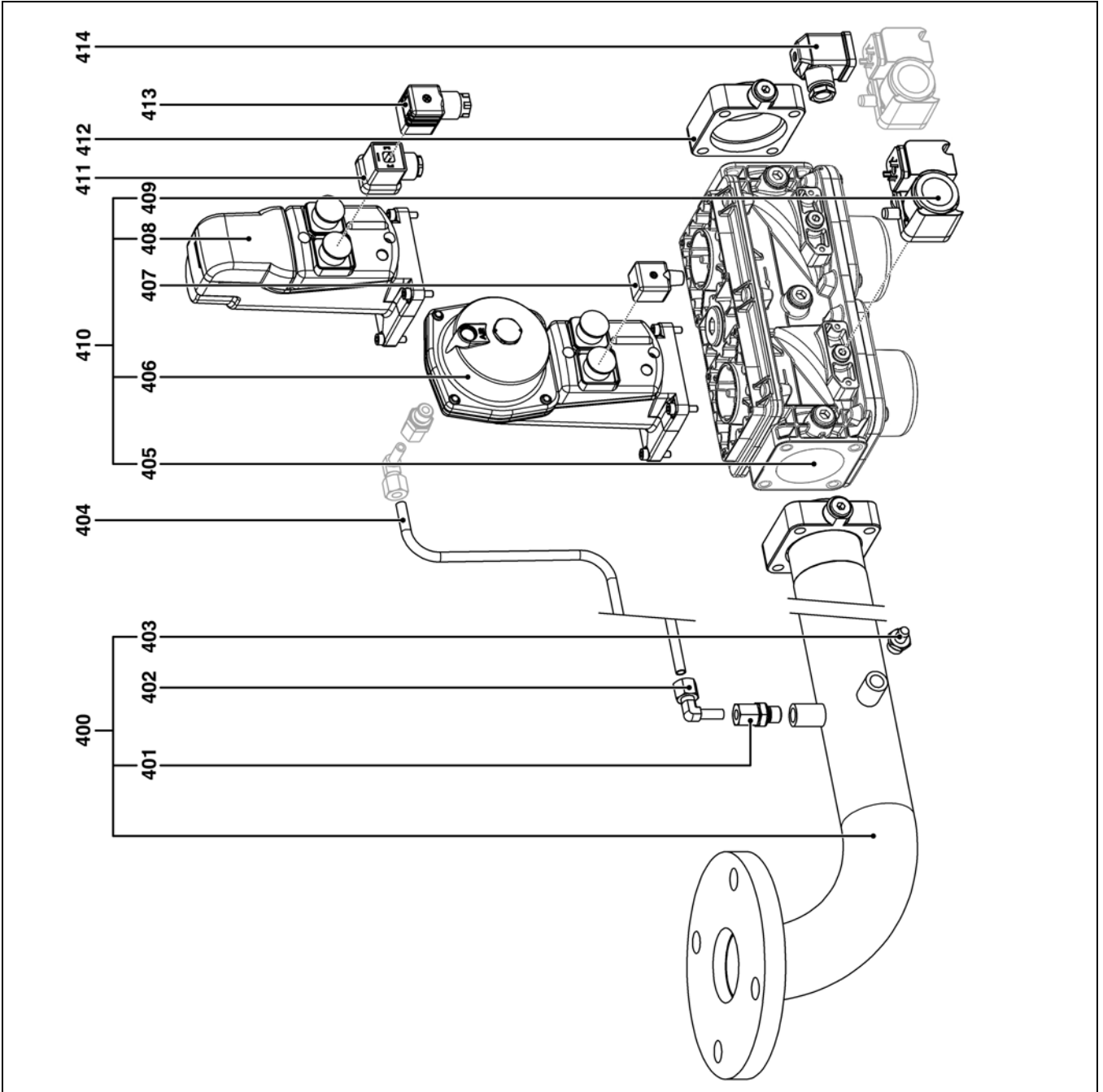


Pos.	Art. Nr.
550	
551	
552	
553	
554	
555	
559	
560	
562	
563	
564	
565	
566	
567	
568	
569	
570	
571	
572	
573	
574	
575	
576	
577	







Pos.	Art. Nr.
400	
401	
402	
403	
404	
405	
406	
407	
408	
409	
410	
411	
412	
413	
414	










	Условные обозначения	Leyenda	Λεζάντα	Legenda	Açıklama
	Сменные детали	Piezas de mantenimiento	Εξαρτήματα συντήρησης	Części serwisowe	Bakım parçaları
	Запчасти	Piezas de recambio	Ανταλλακτικά	Części zamienne	Yedek parçalar
	Быстро изнашивающиеся детали	Piezas de desgaste	Αναλώσιμα	Części zużywające się	Aşınma parçaları



[www.elco.net](http://www.elco.net)

WWW.SMARTFLAM.BY   
**SmartFlam**  
 Импортёр  
 в Республику Беларусь  
**8 (029) 11 915 11 INFO@SMARTFLAM.BY**

		Hotline
	<b>ELCO Austria GmbH</b> Aredstr.16-18 2544 Leobersdorf	0810-400010
	<b>ELCO Belgium nv/sa</b> Z.1 Researchpark 60 1731 Zellik	02-4631902
	<b>ELCOTHERM AG</b> Sarganserstrasse 100 7324 Vilters	0848 808 808
	<b>ELCO GmbH</b> Dreieichstr.10 64546 Mörfelden-Walldorf	0180-3526180
	<b>ELCO Italia S.p.A.</b> Via Roma 64 31023 Resana (TV)	800-087887
	<b>ELCO Burners B.V.</b> Amsterdamsestraatweg 27 1411 AW Naarden	035-6957350
	<b>ООО «Ariston Thermo RUS LLC»</b> Bolshaya Novodmitrovskaya St.bld.14/1 office 626 127015 Moscow -Russia	+7 495 783 0440

Произведено в ЕС. Fabricado en la UE. Κατασκευάζεται στην ΕΕ. Wyprodukowano w UE. AB'de öretilmistir.  
 Недоговорной документ. Documento no contractual. Το παρόν έγγραφο δεν αποτελεί σύμβαση. Niniejszy dokument nie ma charakteru umowy. Baglayıcı olmayan doküman.